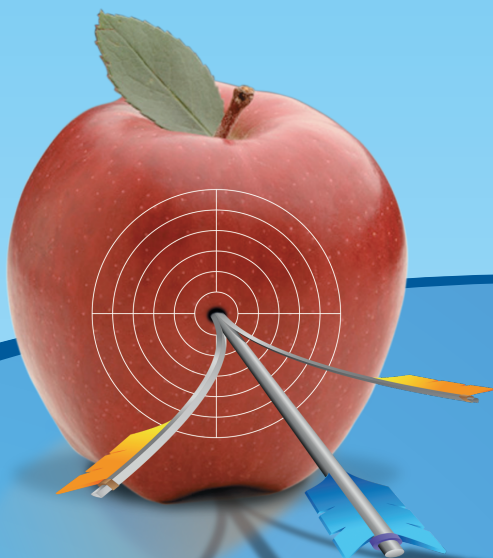


Suprimun

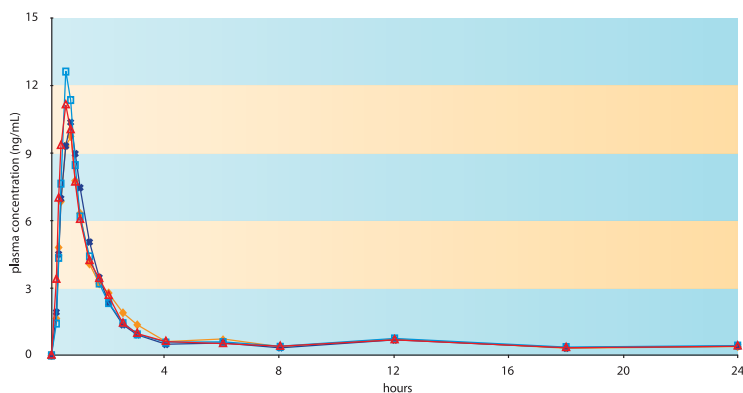
F.C. tablet 500 mg Mycophenolate mofetil

As accurate as the same



E.Rx
62878





◆ **Treatment A:** 1 CellCept® 500 mg Tablet
(Treatment dose = 500 mg) (First administration)

△ **Treatment B:** 1 Suprimun 500 mg Tablet
(Treatment dose = 500 mg) (First administration)

□ **Treatment A:** 1 CellCept® 500 mg Tablet
(Treatment dose = 500 mg) (Second administration)

× **Treatment B:** 1 Suprimun 500 mg Tablet
(Treatment dose = 500 mg) (Second administration)

- **GMP** for Production Line of Hazardous Oral Solid Dosage Forms



- The only company with proven processes and world-class facilities of manufacturing of hazardous medicinal products in Iran (OEB5)

- Adheres to the highest regulatory and environmental health and safety(EHS) standards for handling potent drug compounds

